



REGIONAL SPECIALISED METEOROLOGICAL CENTRE-TROPICAL CYCLONES, NEW DELHI  
TROPICAL CYCLONE ADVISORY BULLETIN NO. 21

FROM: RSMC –TROPICAL CYCLONES, NEW DELHI

TO: STORM WARNING CENTRE, NAYPYI TAW (MYANMAR)  
STORM WARNING CENTRE, BANGKOK (THAILAND)  
STORM WARNING CENTRE, COLOMBO (SRILANKA)  
STORM WARNING CENTRE, DHAKA (BANGLADESH)  
STORM WARNING CENTRE, KARACHI (PAKISTAN)  
METEOROLOGICAL OFFICE, MALE (MALDIVES)  
OMAN METEOROLOGICAL DEPARTMENT, MUSCAT (THROUGH RTH JEDDAH)  
YEMEN METEOROLOGICAL SERVICES, REPUBLIC OF YEMEN (THROUGH RTH JEDDAH)  
NATIONAL CENTRE FOR METEOROLOGY, UAE (THROUGH RTH JEDDAH)  
PRESIDENCY OF METEOROLOGY AND ENVIRONMENT, SAUDI ARABIA (THROUGH RTH JEDDAH)  
IRAN METEOROLOGICAL ORGANISATION, (THROUGH RTH JEDDAH)  
QATAR METEOROLOGICAL DEPARTMENT (THROUGH RTH JEDDAH)

TROPICAL CYCLONE ADVISORY NO. 21 FOR NORTH INDIAN OCEAN (THE BAY OF BENGAL AND ARABIAN SEA) VALID FOR NEXT 120 HOURS ISSUED AT 0900 UTC OF 17.05.2021 BASED ON 0600 UTC OF 17.05.2021.

**SUB: EXTREMELY SEVERE CYCLONIC STORM “TAUKTAE” (PRONOUNCED AS TAU’TE) OVER EASTCENTRAL ARABIAN SEA**

THE **EXTREMELY SEVERE CYCLONIC STORM “TAUKTAE” (PRONOUNCED AS TAU’TE)** OVER EASTCENTRAL ARABIAN SEA MOVED NEARLY NORTHWARDS WITH A SPEED OF ABOUT 13 KMPH DURING PAST 06 HOURS, AND LAY CENTRED AT 0600 UTC OF TODAY, THE 17<sup>TH</sup> MAY, 2021 OVER EASTCENTRAL ARABIAN SEA NEAR LATITUDE 19.2°N AND LONGITUDE 71.5°E, ABOUT 145 KM WEST OF MUMBAI (43003), 180 KM SOUTH-SOUTHEAST OF DIU (42914), 220 KM SOUTHEAST OF VERAVAL (42909) AND 475 KM EAST-SOUTHEAST OF KARACHI (41780).

IT IS VERY LIKELY TO MOVE NORTH-NORTHWESTWARDS AND REACH GUJARAT COAST DURING 1200-1500 UTC OF 17<sup>TH</sup> & CROSS GUJARAT COAST BETWEEN PORBANDAR (42830) & MAHUVA (BHAVNAGAR DISTRICT 42838) **TO THE EAST OF DIU DURING** 1500-1800 UTC OF 17<sup>TH</sup> MAY WITH A MAXIMUM SUSTAINED WIND SPEED OF 155-165 KMPH GUSTING TO 185 KMPH.

Forecast track and intensity are given in the following table:

DATE/TIME(UTC)	POSITION (LAT. °N/ LONG. °E)	MAXIMUM SUSTAINED SURFACE WIND SPEED (KMPH)	CATEGORY OF CYCLONIC DISTURBANCE
17.05.21/0600	19.2/71.5	180-190 GUSTING TO 210	EXTREMELY SEVERE CYCLONIC STORM
17.05.21/1200	20.0/71.3	170-180 GUSTING TO 200	EXTREMELY SEVERE CYCLONIC STORM
17.05.21/1800	20.8/71.1	150-160 GUSTING TO 175	VERY SEVERE CYCLONIC STORM
18.05.21/0000	21.6/71.1	110-120 GUSTING TO 130	SEVERE CYCLONIC STORM
18.05.21/0600	22.5/71.4	70-80 GUSTING TO 90	CYCLONIC STORM
18.05.21/1800	24.0/72.2	50-60 GUSTING TO 70	DEEP DEPRESSION
19.05.21/0600	25.7/73.0	35-45 GUSTING TO 55	DEPRESSION

**PROBABILITY OF CYCLOGENESIS (FORMATION OF DEPRESSION)**

**NIL: 0%, LOW: 1-25%, FAIR: 26-50%, MODERATE: 51-75% AND HIGH: 76-100%**

## REMARKS:

AS PER INSAT-3D SATELLITE IMAGERY BASED ON 0600 UTC OF TODAY THE 17<sup>th</sup> MAY 2021, THE INTENSITY OF THE SYSTEM IS **CATEGORISED AS T 5.5 WITH EYE PATTERN. HOWEVER, EYE CONTINUED TO REMAIN RAGGED.** EYE TEMPERATURE MINUS 16.0 DEG C. BROKEN LOW AND MEDIUM CLOUDS WITH EMBEDDED INTENSE TO VERY INTENSE CONVECTION LAY OVER EASTCENTRAL ARABIAN SEA (AS) BETWEEN LATITUDE 14.5°N & 22°N AND EAST OF LONG 67.0E, OVER ADJOINING GOA, SOUTH KONKAN GOA AND WEST OF MADHYA MAHARASHTRA AND SOUTH GUJARAT.

THE ASSOCIATED MAXIMUM SUSTAINED WIND SPEED IS 105 KNOTS GUSTING TO 115 KNOTS. THE ESTIMATED CENTRAL PRESSURE IS 950HPA. SEA CONDITION IS PHENOMENAL.

THE MADDEN JULIAN INDEX (MJO) CURRENTLY LIES IN PHASE 2 WITH AMPLITUDE MORE THAN 1. IT WILL CONTINUE TO BE IN SAME PHASE & SAME AMPLITUDE TILL 17<sup>TH</sup>. THEREAFTER, IT WILL MOVE TO PHASE 3 WITH AMPLITUDE NEAR 1 DURING SUBSEQUENT TWO DAYS. THUS, MJO IS CONDUCIVE FOR ENHANCED CONVECTION OVER THE ARABIAN SEA (AS) DURING NEXT 2 DAYS. THE TROPICAL CYCLONE HEAT POTENTIAL (TCHP) IS 80-110 KJ/CM<sup>2</sup> OVER EAST CETNRAL AS AND DECREASING TOWARDS NORTH AS. SEA SURFACE TEMPERATURE (SST) IS AROUND 30<sup>0</sup>C EAST CETNRAL AS AND DECREASING TO 29<sup>0</sup>C TOWARDS NORTH AS.

THE LOW LEVEL CYCLONIC VORTICITY IS ABOUT 250-300 X10<sup>-6</sup> S<sup>-1</sup> AROUND SYSTEM CENTRE. LOW LEVEL CONVERGENCE IS (40 X10<sup>-5</sup> S<sup>-1</sup>) TO THE SOUTHEAST OF SYSTEM CENTRE. POSITIVE UPPER LEVEL DIVERGENCE IS (30 X 10<sup>-5</sup> S<sup>-1</sup>) NORTH OF THE SYSTEM CENTRE. UPPER TROPOSPHERIC RIDGE RUNS ALONG 21<sup>0</sup>N. THE SYSTEM IS IN THE REGION OF LOW VERTICAL WIND SHEAR (VWS) (10-15 KTS) AND LIKELY TO COME UNDER INFLUENCE OF MODERATE WIND SHEAR DURING NEXT 18-HOURS.

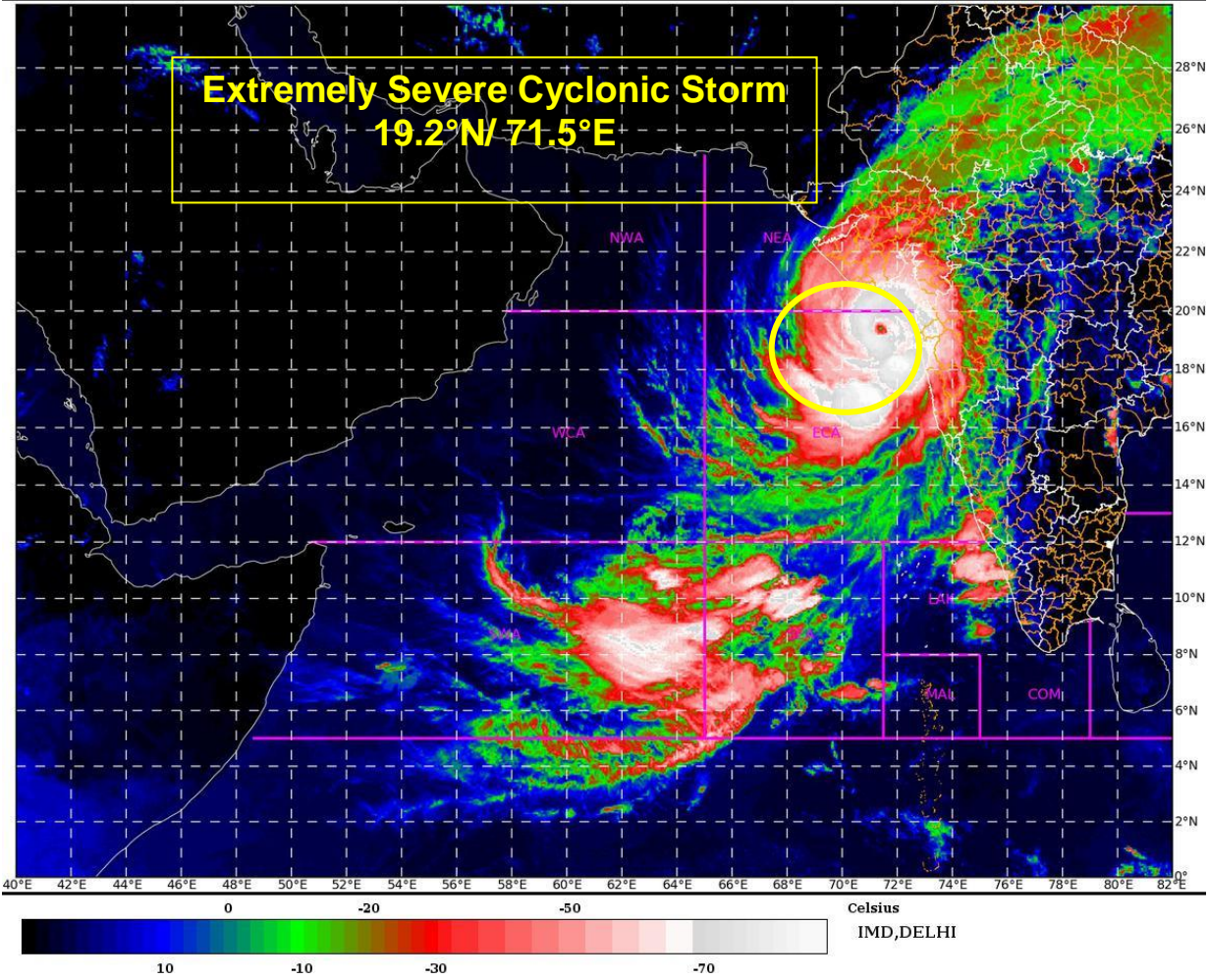
THUS, UNDER FAVOURABLE ENVIRONMENT, THE EXTREMELY SEVERE CYCLONIC STORM OVER EASTCENTRAL ARABIAN SEA IS VERY LIKELY TO MOVE NORTH-NORTHWESTWARDS MAINTAINING ITS INTENSITY AND WEAKEN A LITTLE TO CROSS GUJARAT COAST BETWEEN PORBANDAR (42830) & MAHUVA (BHAVNAGAR DISTRICT; 42838) BETWEEN 15 UTC AND 18 UTC OF 17<sup>th</sup> MAY AS A VERY SEVERE CYCLONIC STORM. DIFFERENT NWP MODELS WITH DETERMINISTIC AND ENSEMBLE FORECASTS ARE SUGGESTING THE SIMILAR SITUATION.

(RK J ENAMANI)  
SCIENTIST-F  
RSMC, NEW DELHI

---

**PROBABILITY OF CYCLOGENESIS (FORMATION OF DEPRESSION)**

**NIL: 0%, LOW: 1-25%, FAIR: 26-50%, MODERATE: 51-75% AND HIGH: 76-100%**

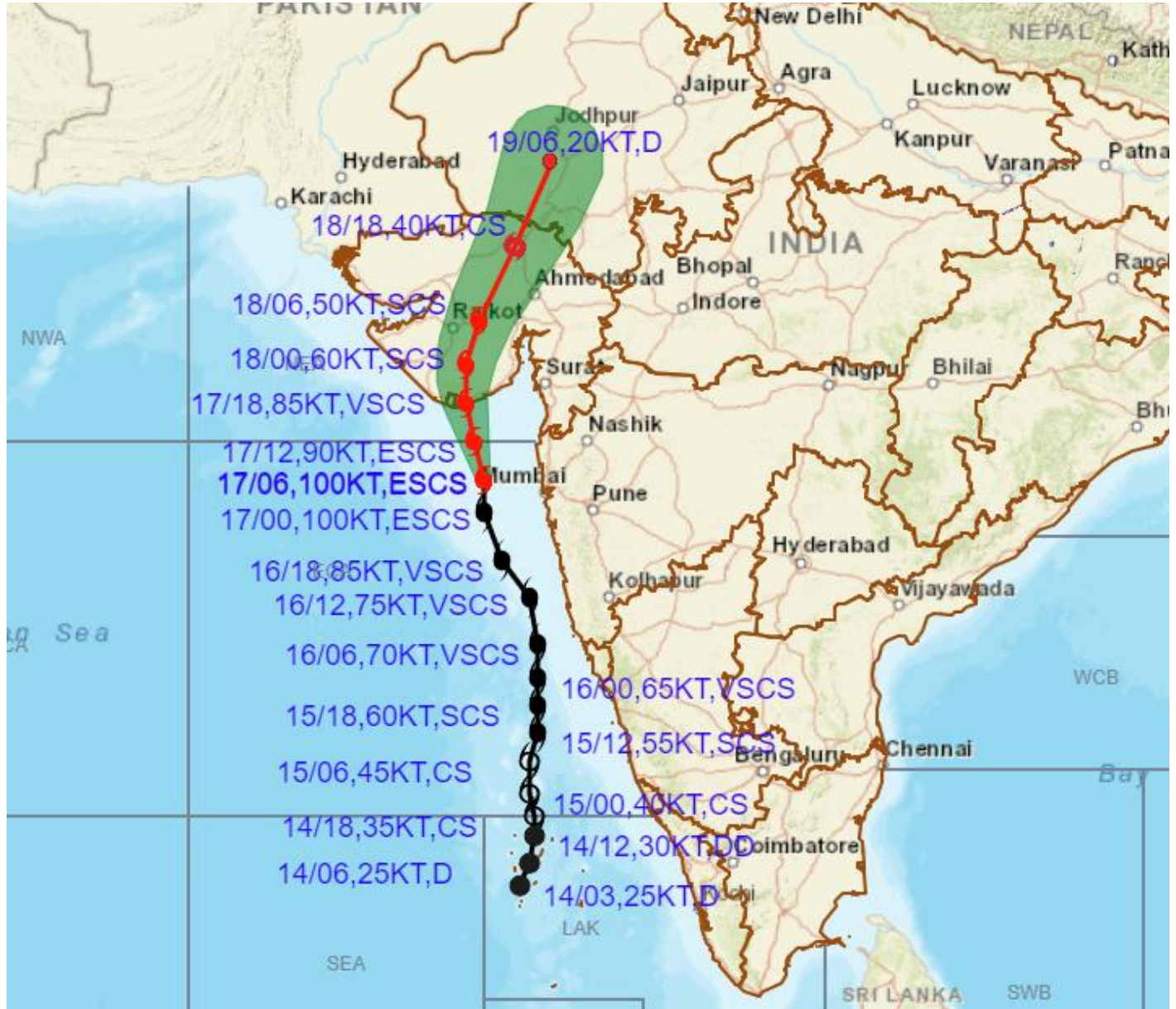


**PROBABILITY OF CYCLOGENESIS (FORMATION OF DEPRESSION)**  
**NIL: 0%, LOW: 1-25%, FAIR: 26-50%, MODERATE: 51-75% AND HIGH: 76-100%**





# OBSERVED AND FORECAST TRACK ALONGWITH CONE OF UNCERTAINTY OF EXTREMELY SEVERE CYCLONIC STORM "TAUKTAE" OVER EASTCENTRAL ARABIAN SEA BASED ON 0600 UTC OF 17<sup>TH</sup> MAY, 2021



DATE/TIME IN UTC  
 IST=UTC + 0530  
 L: LOW PRESSURE AREA  
 WML: WELL MARKED LOW PRESSURE AREA  
 D: DEPRESSION (17-27 KT)  
 DD: DEEP DEPRESSION (28-33 KT)  
 CS: CYCLONIC STORM (34-47 KT)  
 SCS: SEVERE CYCLONIC STORM (48-63KT)  
 VSCS: VERY SEVERE CYCLONIC STORM (64-89 KT)  
 ESCS: EXTREMELY SEVERE CYCLONIC STORM (90-119 KT)  
 SuCS: SUPER CYCLONIC STORM ( $\geq$  120 KT)

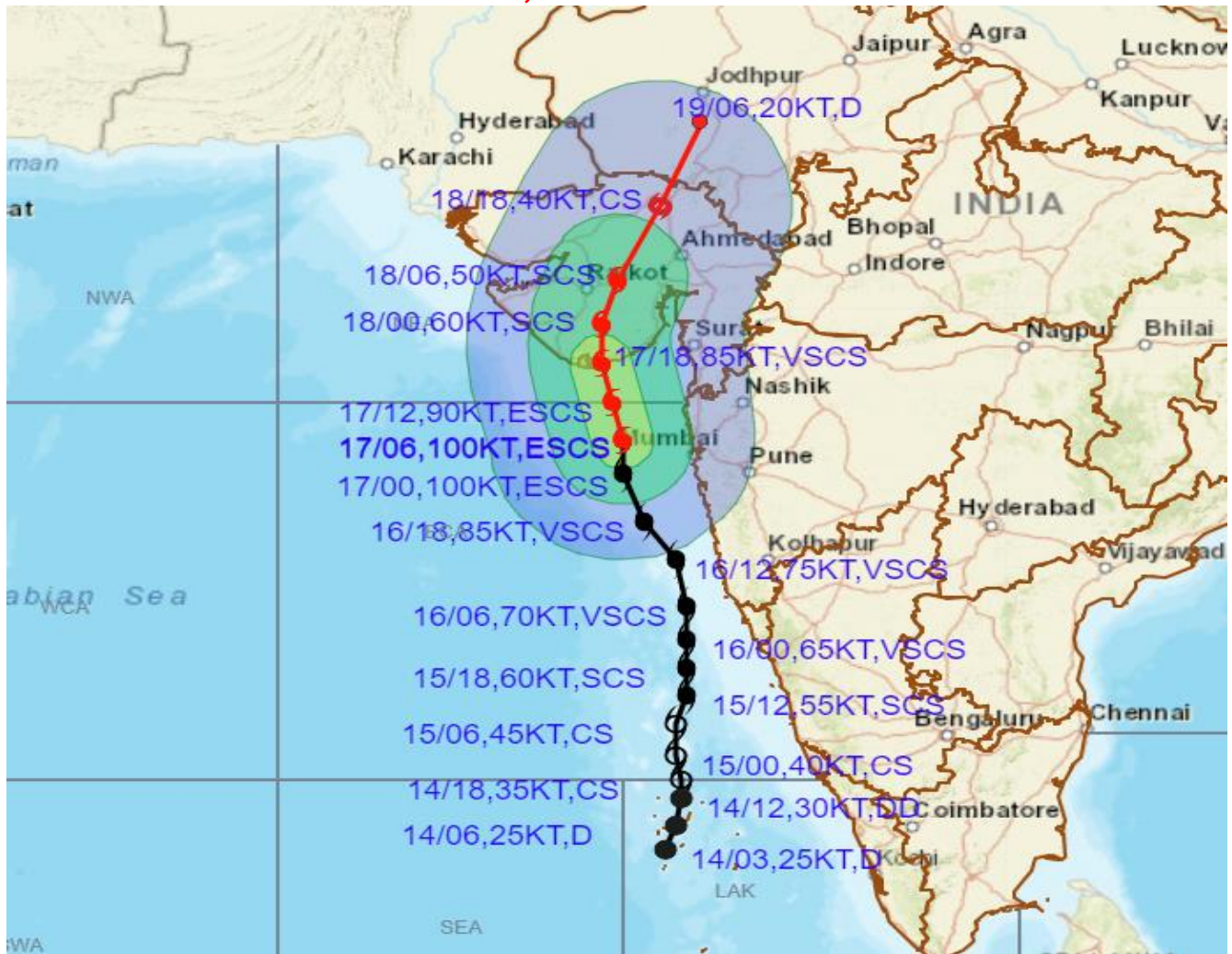
- LESS THAN 34 KT
- 34-47 KT
- $\geq$  48 KT
- OBSERVED TRACK
- FORECAST TRACK
- CONE OF UNCERTAINTY

**PROBABILITY OF CYCLOGENESIS (FORMATION OF DEPRESSION)**

NIL: 0%, LOW: 1-25%, FAIR: 26-50%, MODERATE: 51-75% AND HIGH: 76-100%



# OBSERVED AND FORECAST TRACK ALONGWITH CONE OF UNCERTAINTY OF EXTREMELY SEVERE CYCLONIC STORM "TAUKTAE" OVER EASTCENTRAL ARABIAN SEA BASED ON 0600 UTC OF 17<sup>TH</sup> MAY, 2021



DATE/TIME IN UTC  
 IST=UTC + 0530  
 L: LOW PRESSURE AREA  
 WML: WELL MARKED LOW PRESSURE AREA  
 D: DEPRESSION (17-27 KT)  
 DD: DEEP DEPRESSION (28-33 KT)  
 CS: CYCLONIC STORM (34-47 KT)  
 SCS: SEVERE CYCLONIC STORM (48-63KT)  
 VSCS: VERY SEVERE CYCLONIC STORM (64-89 KT)  
 ESCS: EXTREMELY SEVERE CYCLONIC STORM (90-119 KT)  
 SuCS: SUPER CYCLONIC STORM ( $\geq$  120 KT)

● LESS THAN 34 KT  
 ○ 34-47 KT  
 ⊙  $\geq$  48 KT  
 — OBSERVED TRACK  
 — FORECAST TRACK  
 ▲ CONE OF UNCERTAINTY  
 AREA OF MAXIMUM SUSTAINED WIND SPEED:  
 ■ 28-33 KT (52-61 KMPH)  
 ■ 34-49 KT (62-91 KMPH)  
 ■ 50-63 KT (92-117 KMPH)  
 ■  $\geq$  64 KT ( $\geq$ 118 KMPH)

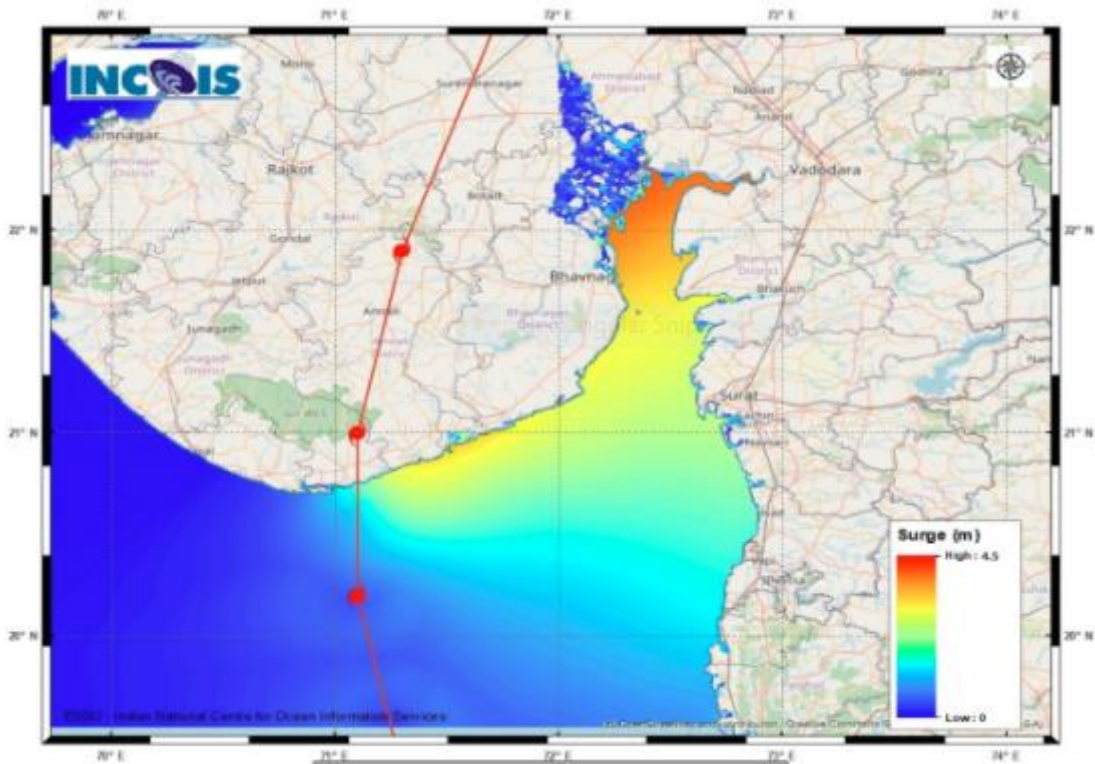
### IMPACT OVER THE SEA

MSW (knot/kmph)	Impact	Action
28-33 (52-61)	Very rough seas	Total suspension of fishing operations
34-49 (62-91)	High to very high seas	Total suspension of fishing operations
50-63 (92-117)	Very high seas	Total suspension of fishing operations
$\geq$ 64 ( $\geq$ 118)	Phenomenal	Total suspension of fishing operations

### PROBABILITY OF CYCLOGENESIS (FORMATION OF DEPRESSION)

NIL: 0%, LOW: 1-25%, FAIR: 26-50%, MODERATE: 51-75% AND HIGH: 76-100%





Page 2 Figure: Storm Surge Map

**PROBABILITY OF CYCLOGENESIS (FORMATION OF DEPRESSION)**  
**NIL: 0%, LOW: 1-25%, FAIR: 26-50%, MODERATE: 51-75% AND HIGH: 76-100%**